

# Confined Space Inventory for Saint Cloud Public Schools



**Inspector:** Rachel Koehler

**Inspection Date:** 1/8/2007

**Building:** McKinley Center

**Location:** Mechanical Room G21

**Type of Space:** Tunnel

**Space Classification:** Non-Permit

**Potential Hazards:**

*No Hazards*

**Number of Entries into Space:** 2

**Other Considerations:**

*Asbestos*

*City sewer or water*

*Electrical*

*Poor lighting*

*Steam pipes*

**Comments:** Tunnel travels throughout south side of building.



**Photo Date:** 1/8/2007

**Photo Description**

Tunnel access from  
Mechanical Room G21.

# Confined Space Inventory for Saint Cloud Public Schools



**Inspector:** Rachel Koehler

**Inspection Date:** 1/8/2007

**Building:** McKinley Center

**Location:** Boiler Room

**Type of Space:** Sump

**Space Classification:** Permit

**Potential Hazards:**

*Potential for oxygen deficiency*

*Engulfment*

**Number of Entries into Space:** 1

**Other Considerations:**

*Biological*

*City sewer or water*

*Slick/wet surfaces*

**Comments:** Lockout/Tagout procedures for pumps are required prior to entry.



**Photo Date:** 1/8/2007

**Photo Description**

Sump



# Confined Space Inventory for Saint Cloud Public Schools



**Inspector:** Rachel Koehler

**Inspection Date:** 1/8/2007

**Building:** McKinley Center

**Location:** Exterior Building North side

**Type of Space:** Storm sewer ( 2 )

**Space Classification:** Permit

**Potential Hazards:**

*Potential for oxygen deficiency*

*Engulfment*

*Configuration*

**Number of Entries into Space:** 1

**Other Considerations:**

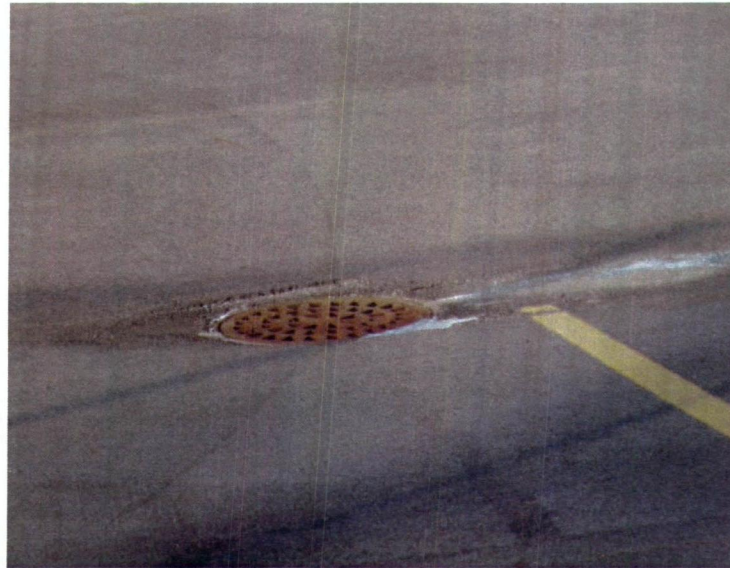
*City sewer or water*

*Fall hazards*

*Poor lighting*

*Slick/wet surfaces*

**Comments:** None



**Photo Date:** 1/8/2007

**Photo Description**

Storm Sewer

# Confined Space Inventory for Saint Cloud Public Schools



**Inspector:** Rachel Koehler

**Inspection Date:** 1/8/2007

**Building:** McKinley Center

**Location:** Elevator

**Type of Space:** Elevator shaft

**Space Classification:** Non-Permit

**Potential Hazards:**

**Number of Entries into Space:** 1

**Other Considerations:**

*Electrical*

*Fall hazards*

*Falling objects*

**Comments:** Lockout/Tagout procedures for elevator are required prior to entry.



**Photo Date:** 1/8/2007

**Photo Description**

Elevator